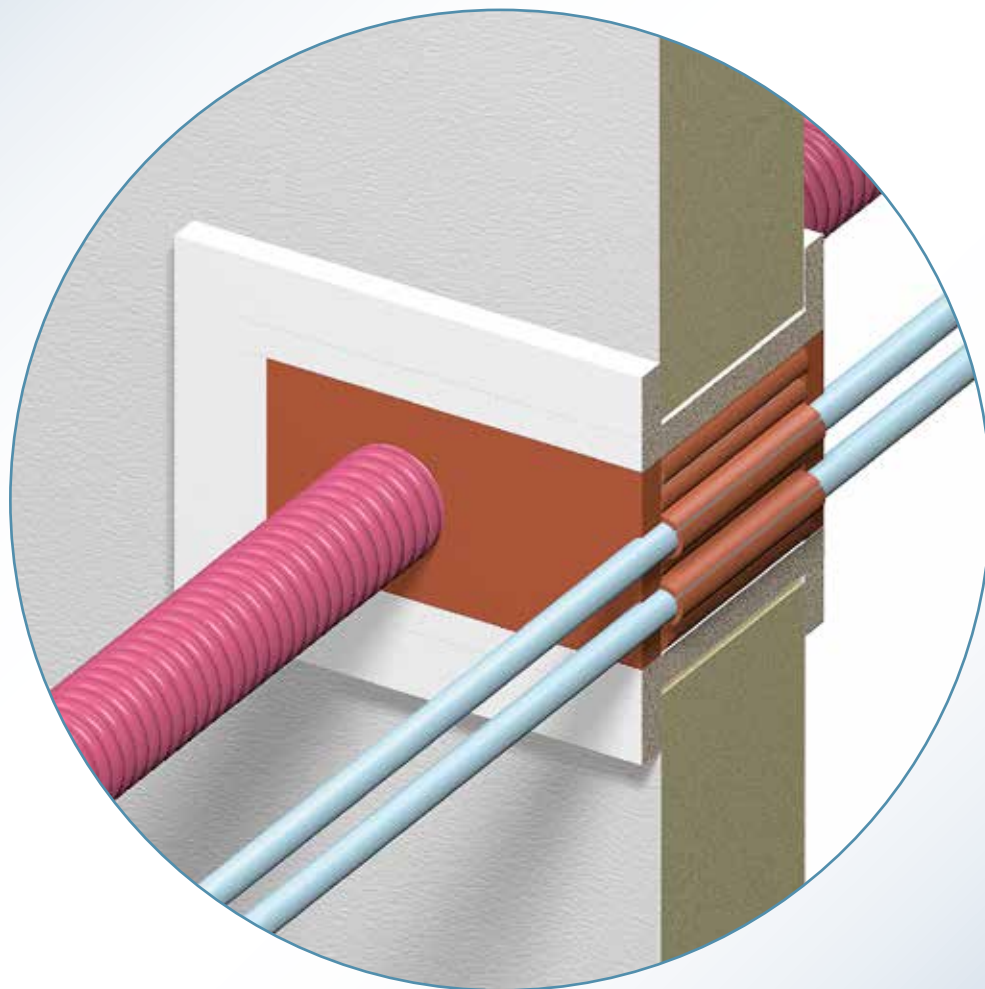


**INSTALLATION INSTRUCTIONS
NOFIRNO® (MULTI-) CABLE
TRANSITS IN FYLLOFYS®
TRANSITS IN COMPOSITE
PANELS EI 60 CLASS**



FYLLOFYS® FISSIC®

NOFIRNO®



SEALING VALLEY

KNOWLEDGE TRANSFER, EDUCATION AND TRAINING

Beele campus 45.000 m²
Ready 2020/2021



- A: Reception, Education Center, Workshops, Video Conferences
 B: Demonstration, Training and Installation
 C: R&D center, Testing Facilities
 D: Pilot plant for new developments
 E: Production Plant phase 1 and 2
 F: Park with amphitheater and food forest 15.000 m²

Copyright

: BEELE Engineering BV, Aalten, the Netherlands.
 Proprietary rights on all drawings and technical data released in this brochure. © 1997-2032

**Edition
Note**

: February 2023
 : No part of this publication may be reproduced without explicit written approval of BEELE Engineering BV.

Research & Development

Note

: BEELE Engineering BV, Aalten, the Netherlands.
 : The manufacturer reserves the right to make dimensional and design modifications without prior notification.

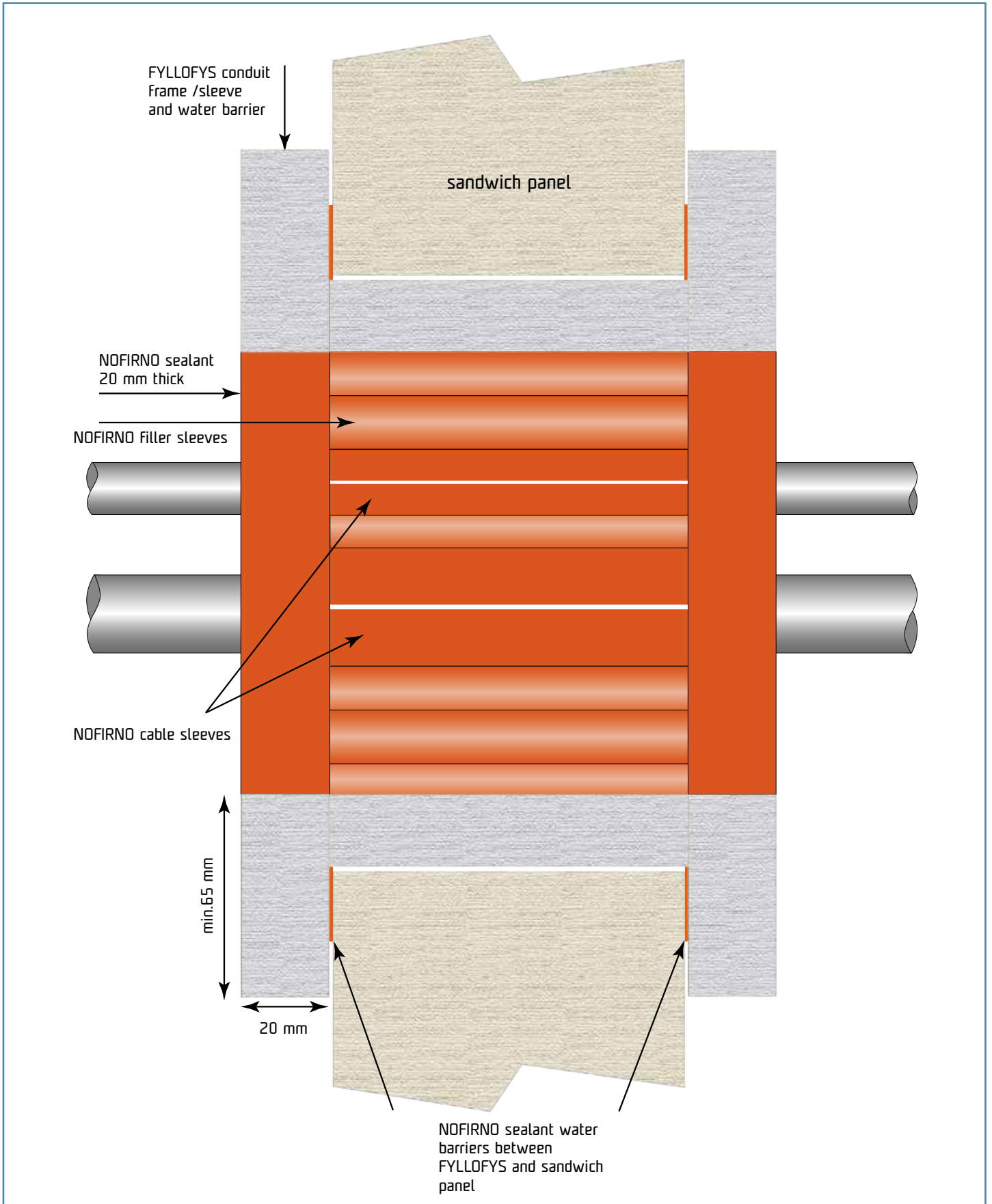
©

: ACTIFOAM, AQUASTOP, BEEBLOCK, BEELE, BEELE WE CARE, BEESEAL, CET-A-SIL, CONDUCTON, CONTROFIL, CRUSHER, CSD, DYNATITE, FIRAQUA, FIRSTO, FISSIC, FIWA, FYLLOFYYS, FYLLOFOAM, GLANDMOD, LEAXEAL, NOFIRNO, RISE, SEALING VALLEY, S, SLIPSIL, Ranges SLIPSIL plugs are registered trade marks of BEELE Engineering.

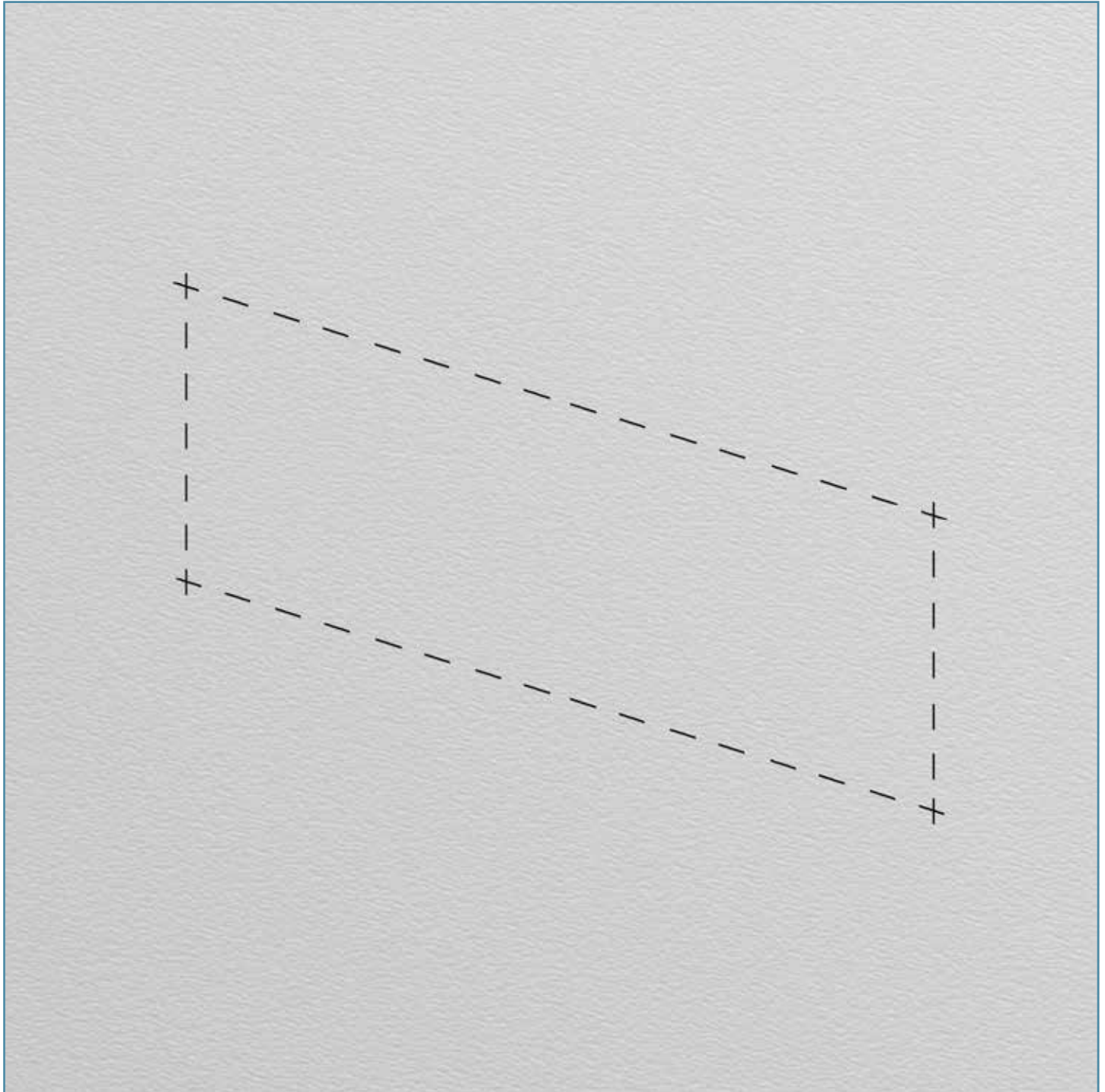
brochure code

: installation NOFIRNO FYLLOFYYS composite cable

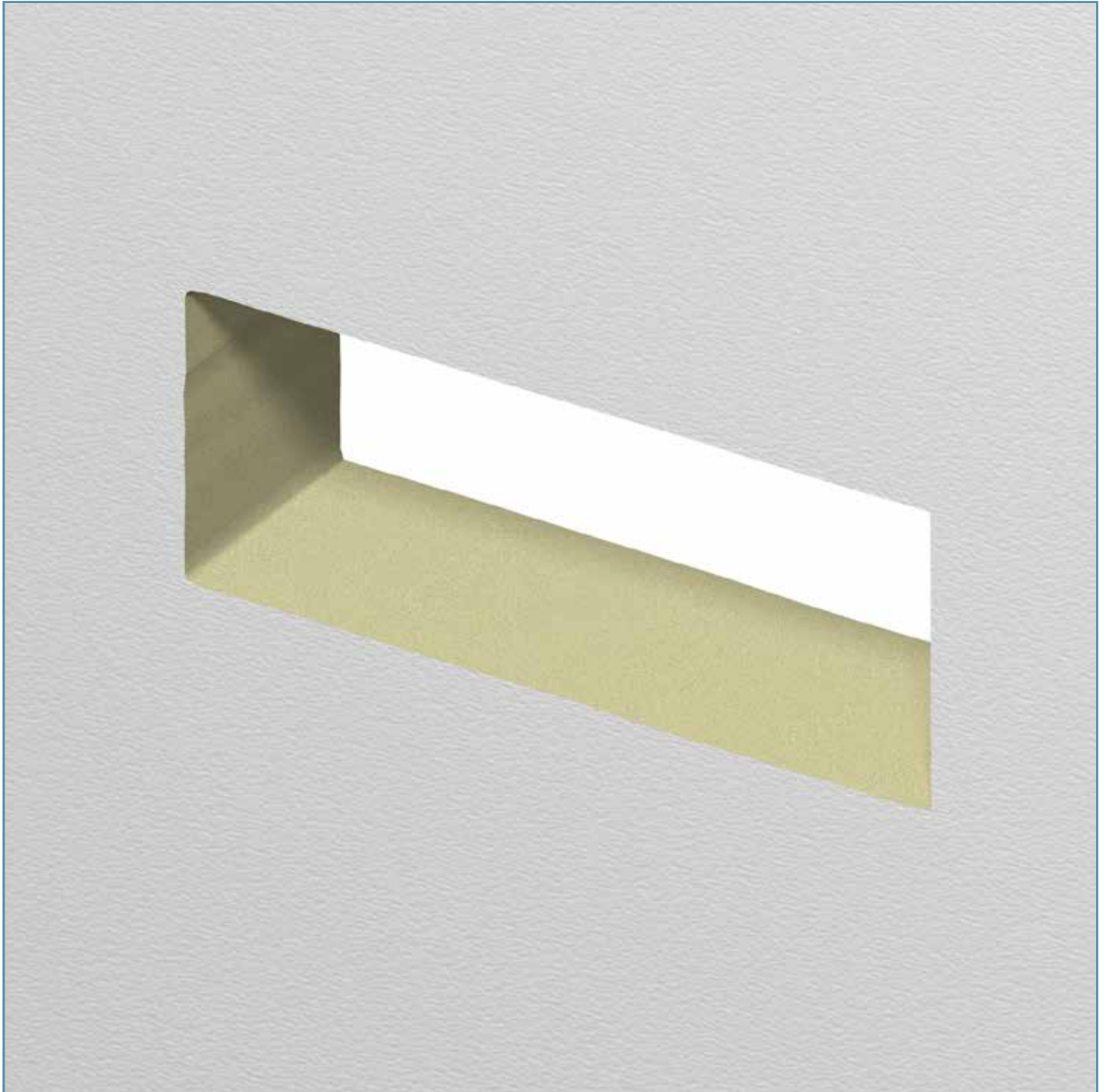
INSTALLATION INSTRUCTIONS FOR NOFIRNO® MULTI-CABLE TRANSIT SEALING SYSTEM IN FYLLOFYS CONDUITS



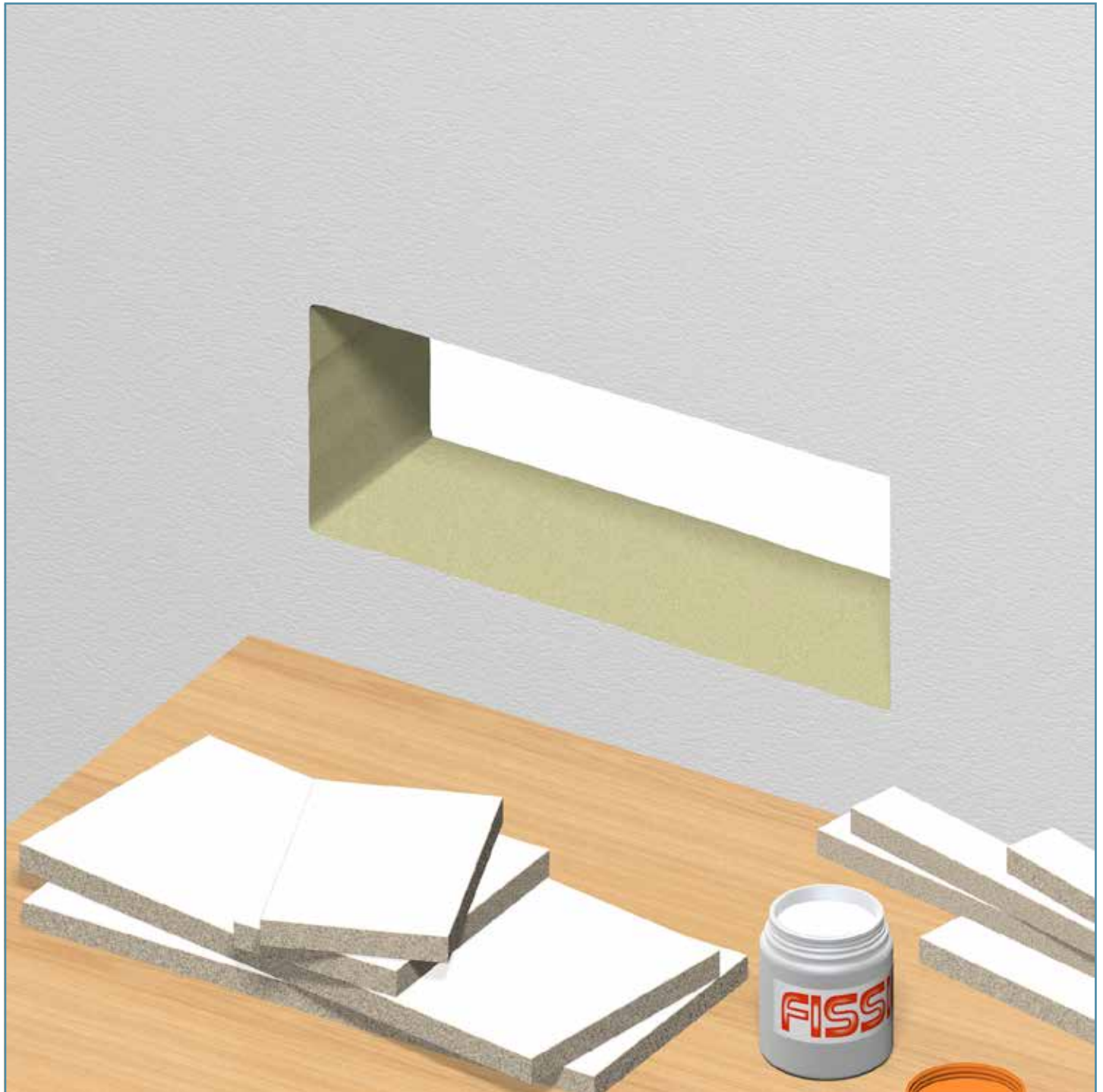
INSTALLATION INSTRUCTIONS FOR NOFIRNO® MULTI-CABLE TRANSIT SEALING SYSTEM IN FYLLOFYS CONDUITS



**INSTALLATION INSTRUCTIONS FOR NOFIRNO® MULTI-CABLE
TRANSIT SEALING SYSTEM IN FYLLOFYS CONDUITS**



**INSTALLATION INSTRUCTIONS FOR NOFIRNO® MULTI-CABLE
TRANSIT SEALING SYSTEM IN FYLLOFYS CONDUITS**



**INSTALLATION INSTRUCTIONS FOR NOFIRNO® MULTI-CABLE
TRANSIT SEALING SYSTEM IN FYLLOFYS CONDUITS**

