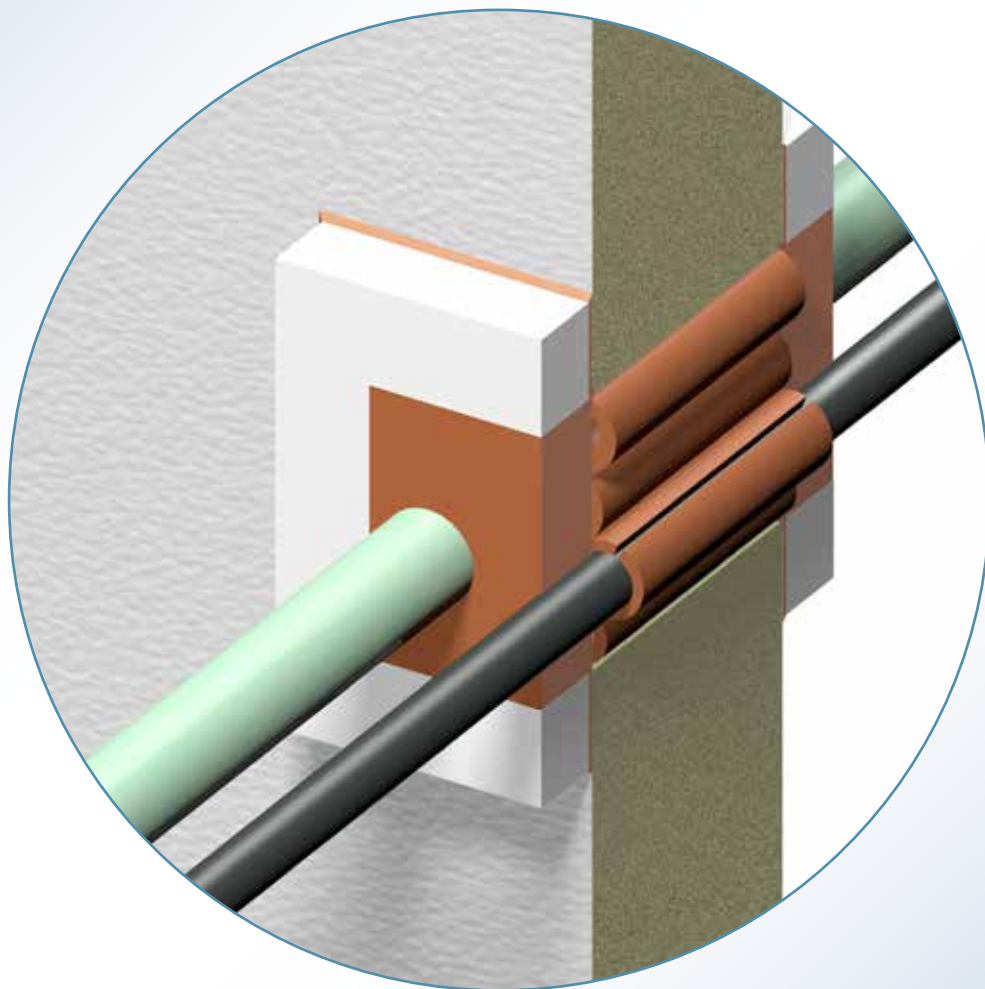




INSTALLATION INSTRUCTIONS NOFIRNO® (MULTI-) CABLE TRANSITS IN EXISTING COM- POSITE WALLS WITH FYLLOFYS® COMPONENTS



FYLLOFYS® FISSIC®

NO FIRNO®



SEALING VALLEY

KNOWLEDGE TRANSFER, EDUCATION AND TRAINING

Beele campus 45.000 m²
Ready 2020/2021



- A: Reception, Education Center, Workshops, Video Conferences
 B: Demonstration, Training and Installation
 C: R&D center, Testing Facilities
 D: Pilot plant for new developments
 E: Production Plant phase 1 and 2
 F: Park with amphitheater and food forest 15.000 m²

Copyright : BEELE Engineering BV, Aalten, the Netherlands.
 Proprietary rights on all drawings and technical data released in this brochure. © 1997-2032

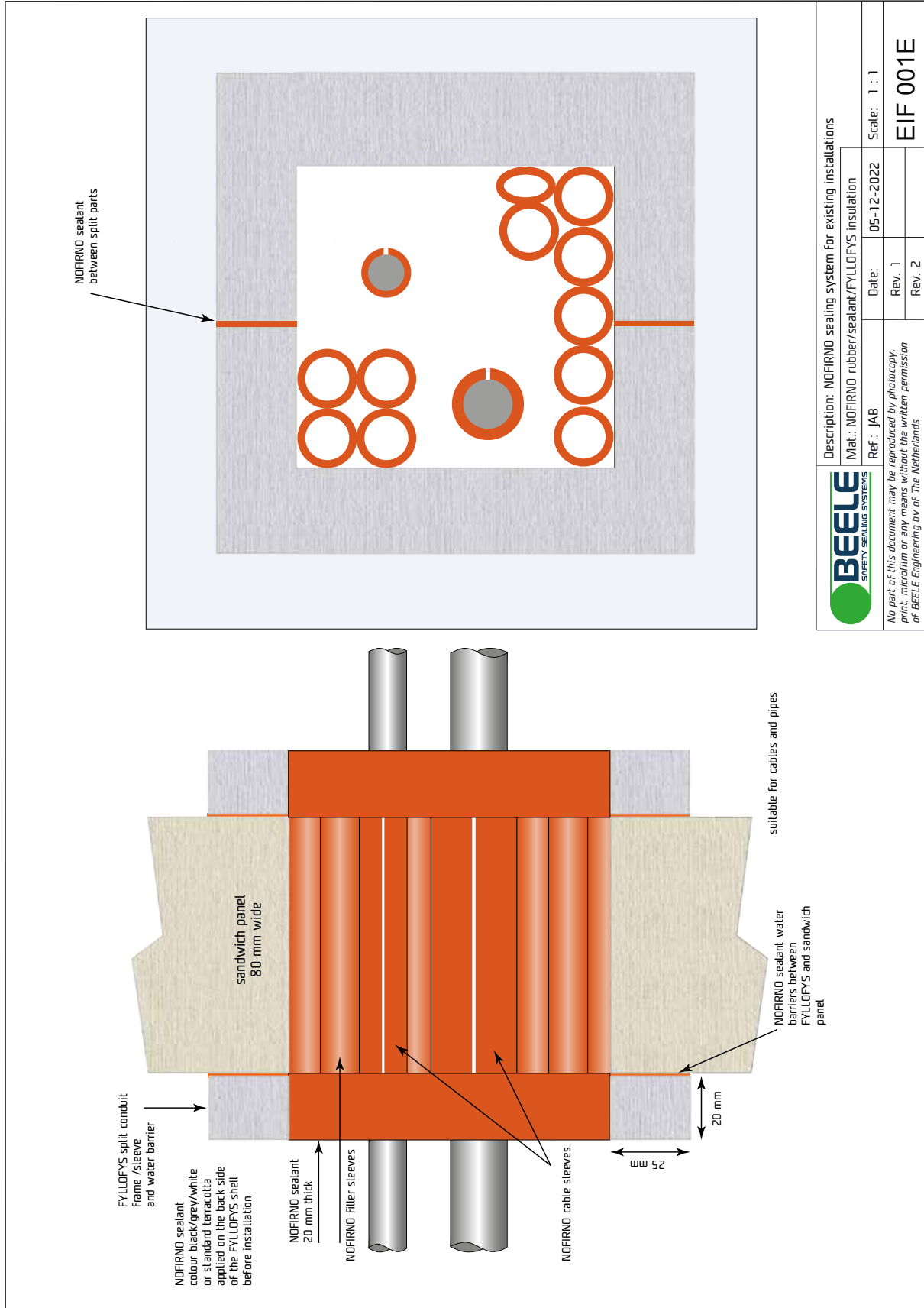
Edition : February 2023
Note : No part of this publication may be reproduced without explicit written approval of BEELE Engineering BV.

Research & Development : BEELE Engineering BV, Aalten, the Netherlands.
Note : The manufacturer reserves the right to make dimensional and design modifications without prior notification.

© : ACTIFOAM, AQUASTOP, BEEBLOCK, BEELE, BEELE WE CARE, BEESEAL, CET-A-SIL, CONDUCTON, CONTROFIL, CRUSHER, CSD, DYNATITE, FIRAQUA, FIRSTO, FISSIC, FIWA, FYLLOFYYS, FYLLOFOAM, GLANDMOD, LEAXEAL, NOFIRNO, RISE, SEALING VALLEY, S, SLIPSIL, Ranges SLIPSIL plugs are registered trade marks of BEELE Engineering.

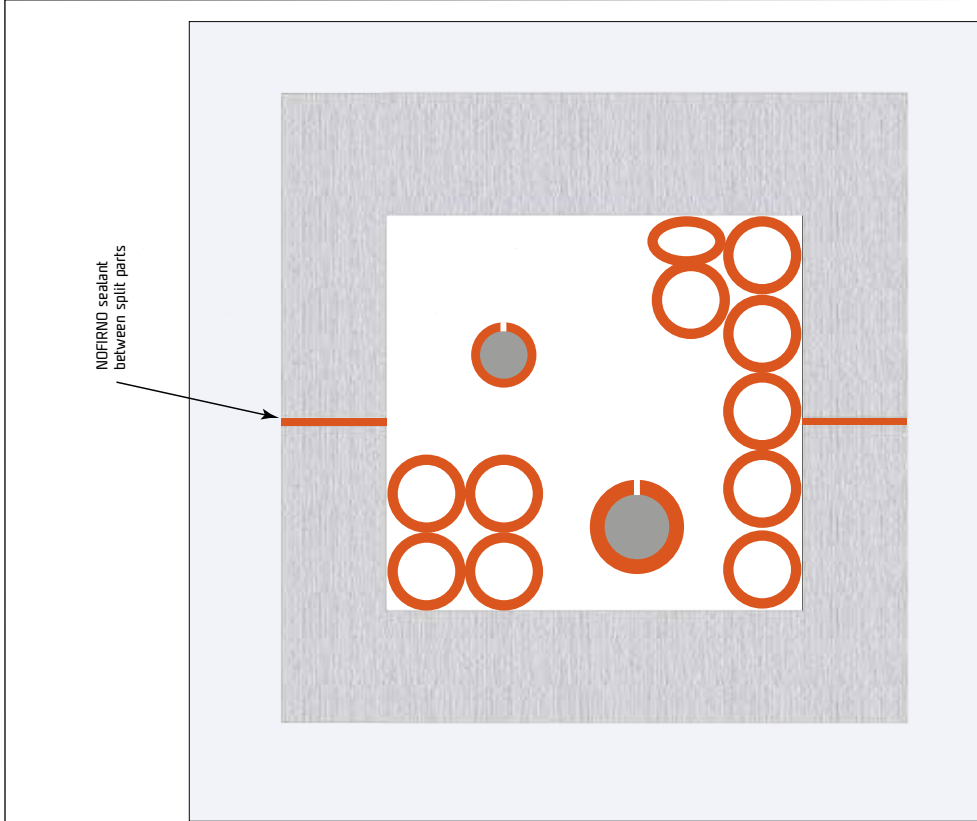
brochure code : installation NOFIRNO FYLLOFYYS composite cable

INSTALLATION INSTRUCTIONS FOR NO FIRNO® MULTI-CABLE TRANSIT SEALING SYSTEM IN FYLLOFYS CONDUITS

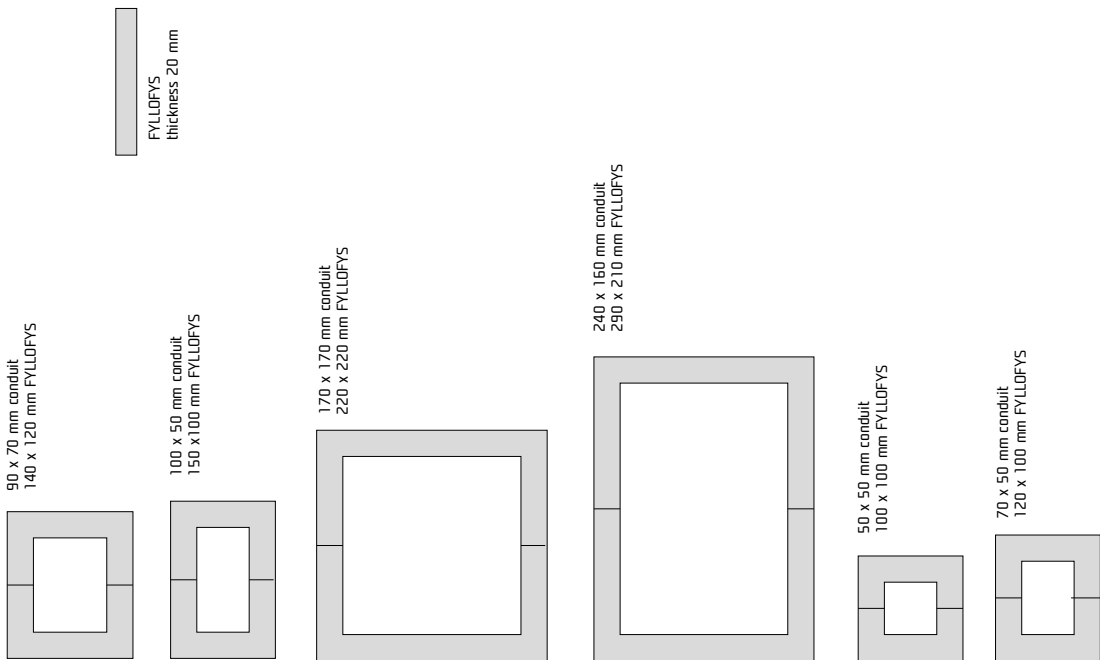


	Description: NO FIRNO sealing system for existing installations		
	Mat.: NO FIRNO rubber/sealant/FYLLOFYS insulation		
	Ref.: JAB	Date: 05-12-2022	Scale: 1 : 1
No part of this document may be reproduced by photocopy, print, microfilm or any means without the written permission of BEELE Engineering bv of The Netherlands			Rev. 1
			Rev. 2
			EIF 001E

INSTALLATION INSTRUCTIONS FOR NO FIRNO® MULTI-CABLE TRANSIT SEALING SYSTEM IN FYLLOFYS CONDUITS



FYLLOFYS split casings



	Description: NO FIRNO sealing system for existing installations		
	Mat.: NO FIRNO rubber/sealant/FYLLOFYS insulation		
	Ref.: JAB	Date: 08-12-2022	Scale: 1 : 4
No part of this document may be reproduced by photocopy, print, microfilm or any means without the written permission of BEELE Engineering bv of The Netherlands			Rev. 1
			Rev. 2
			EIF 002E

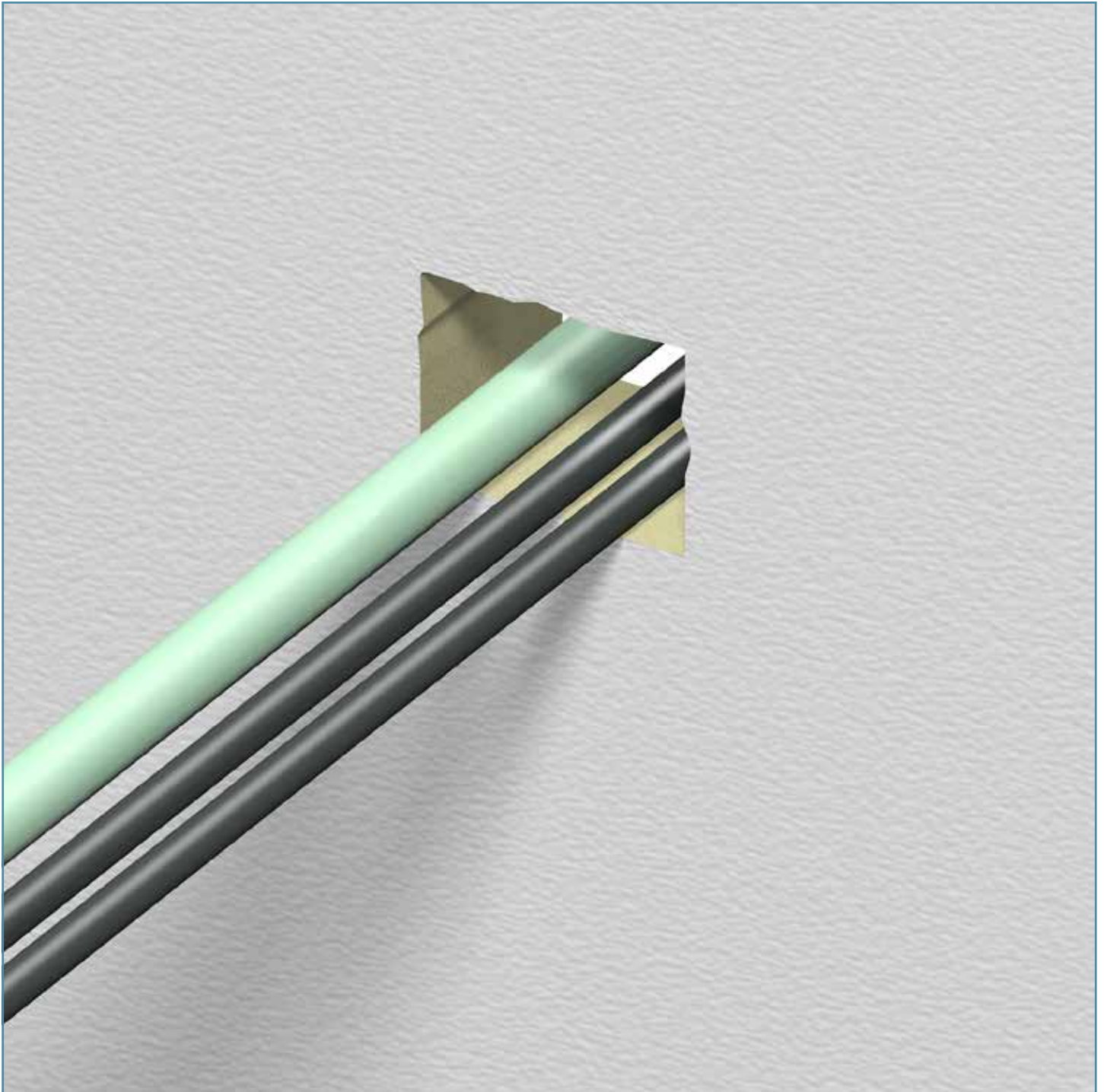
INSTALLATION INSTRUCTIONS FOR NOFIRNO® MULTI-CABLE TRANSIT SEALING SYSTEM IN FYLLOFYS CONDUITS



INSTALLATION INSTRUCTIONS FOR NO FIRNO® MULTI-CABLE TRANSIT SEALING SYSTEM IN FYLLOFYS CONDUITS



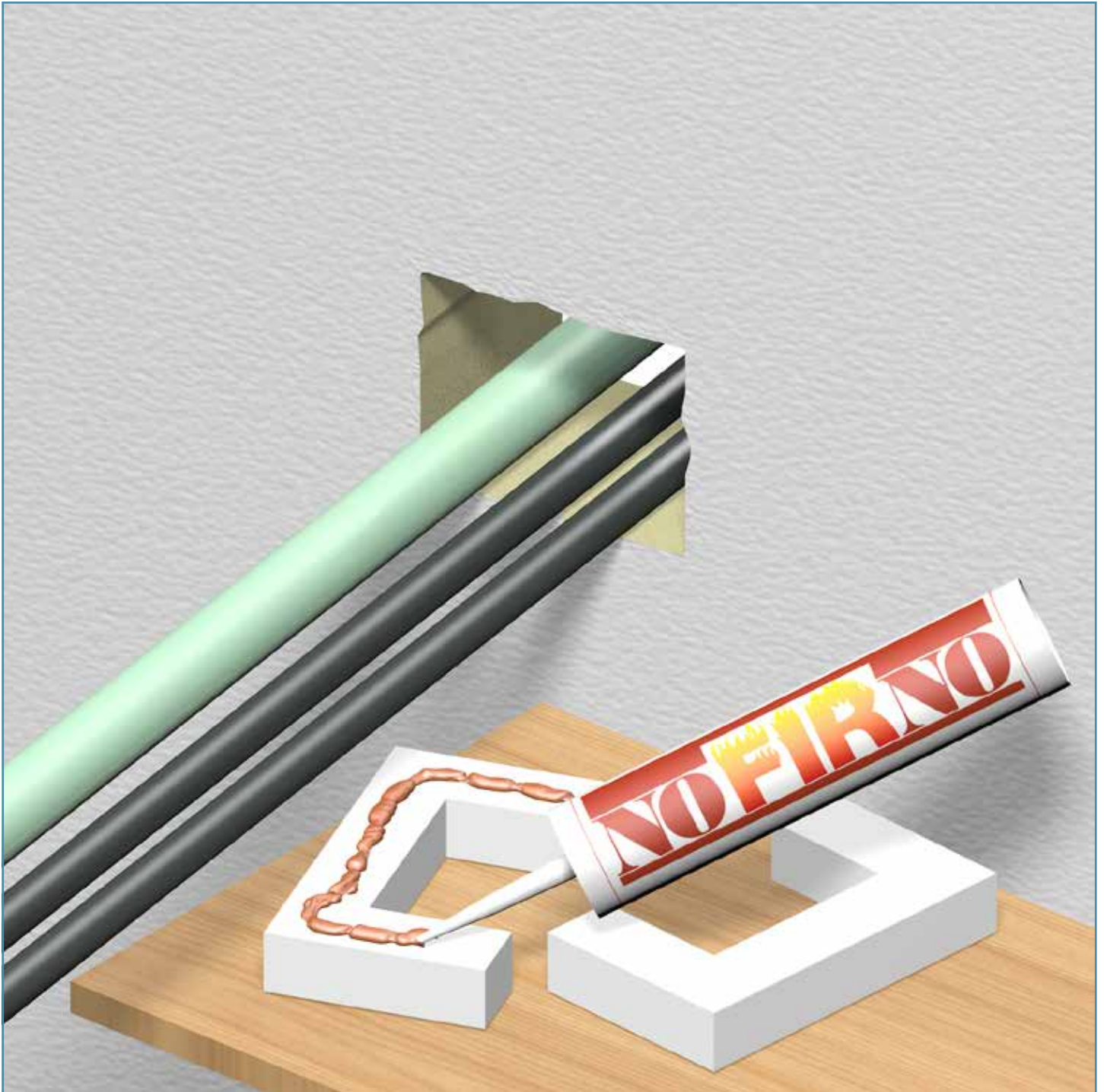
INSTALLATION INSTRUCTIONS FOR NOFIRNO® MULTI-CABLE TRANSIT SEALING SYSTEM IN FYLLOFYS CONDUITS



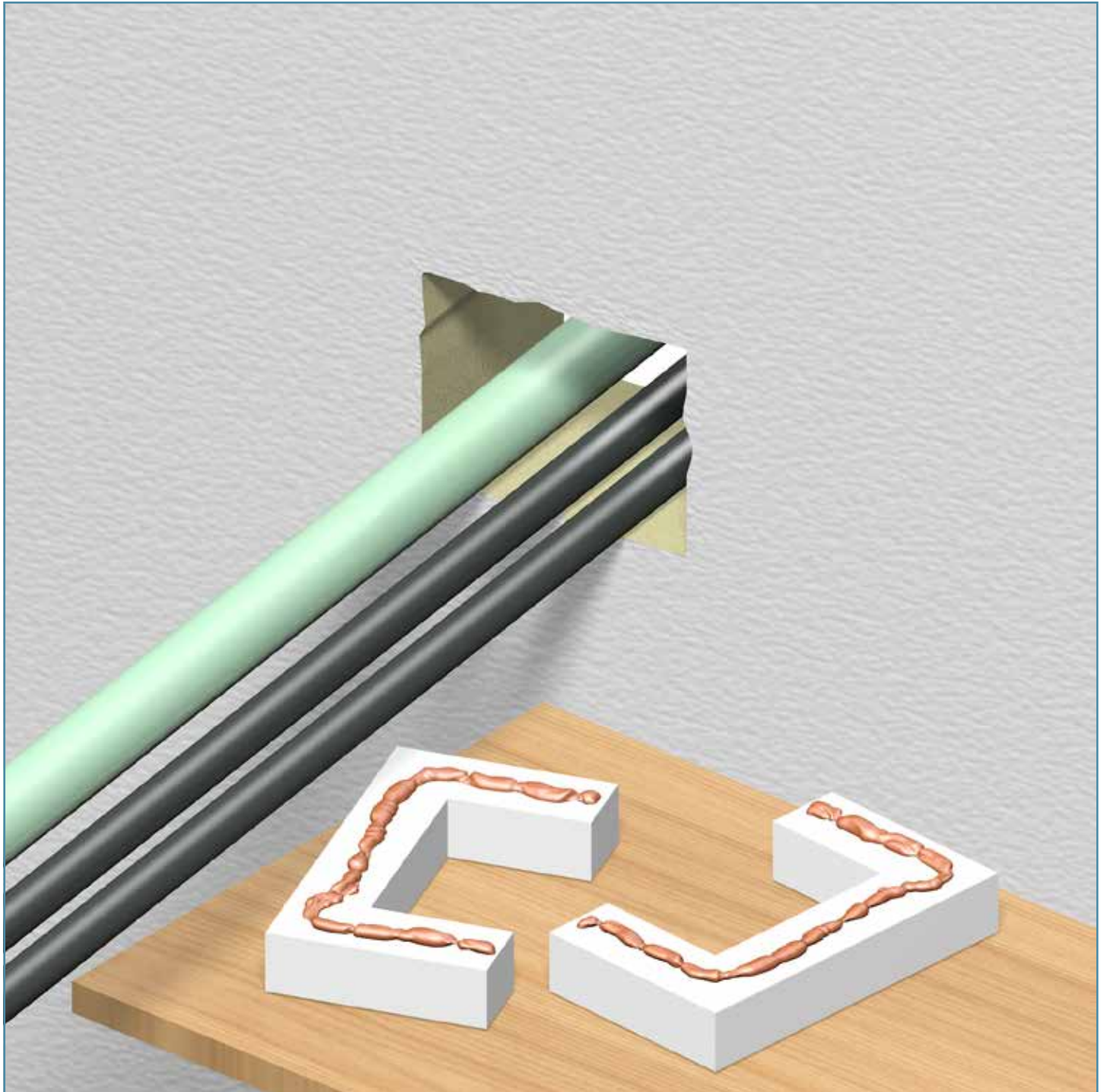
INSTALLATION INSTRUCTIONS FOR NOFIRNO® MULTI-CABLE TRANSIT SEALING SYSTEM IN FYLLOFYS CONDUITS



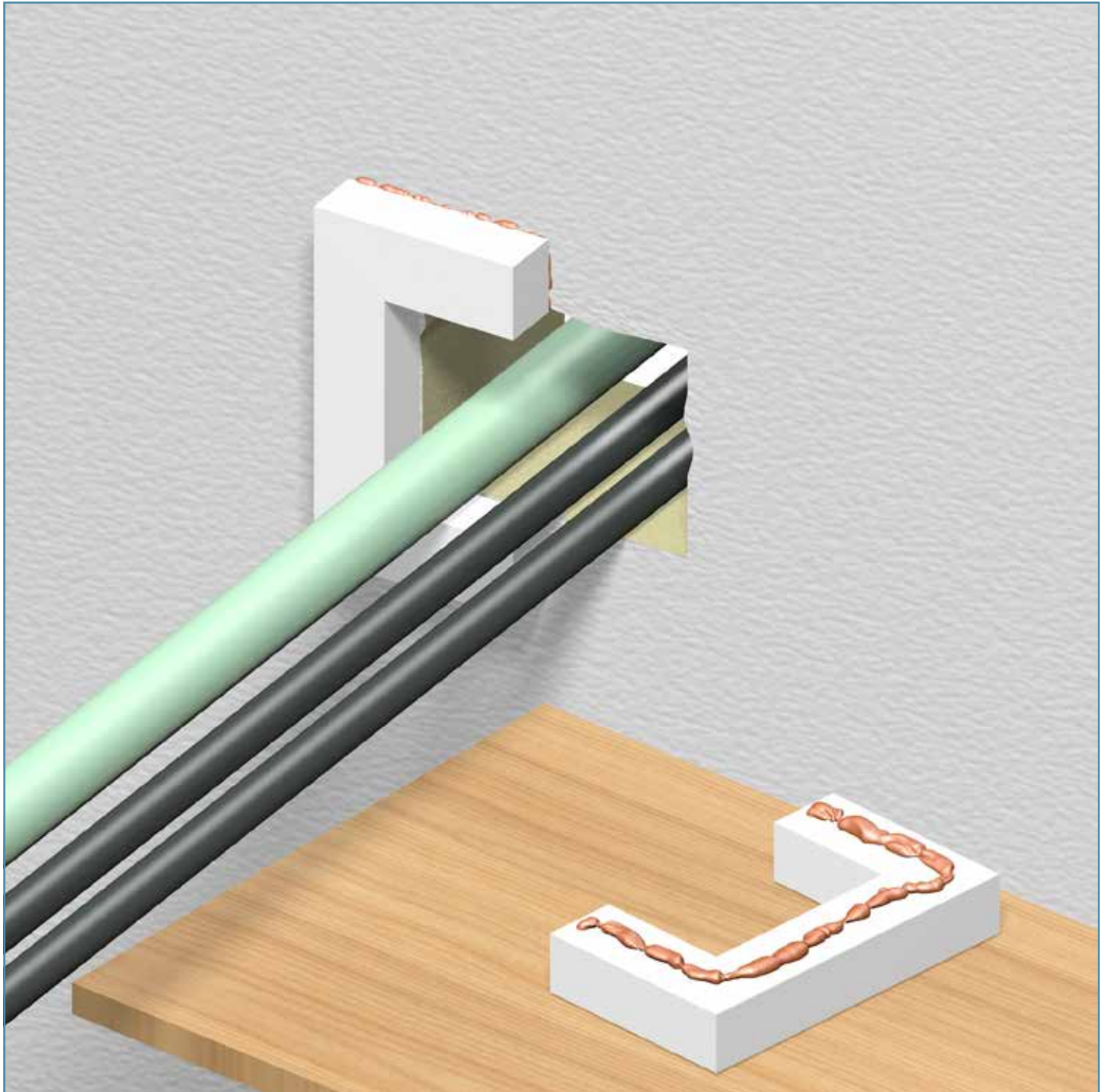
**INSTALLATION INSTRUCTIONS FOR NO FIRNO® MULTI-CABLE
TRANSIT SEALING SYSTEM IN FYLLOFYS CONDUITS**



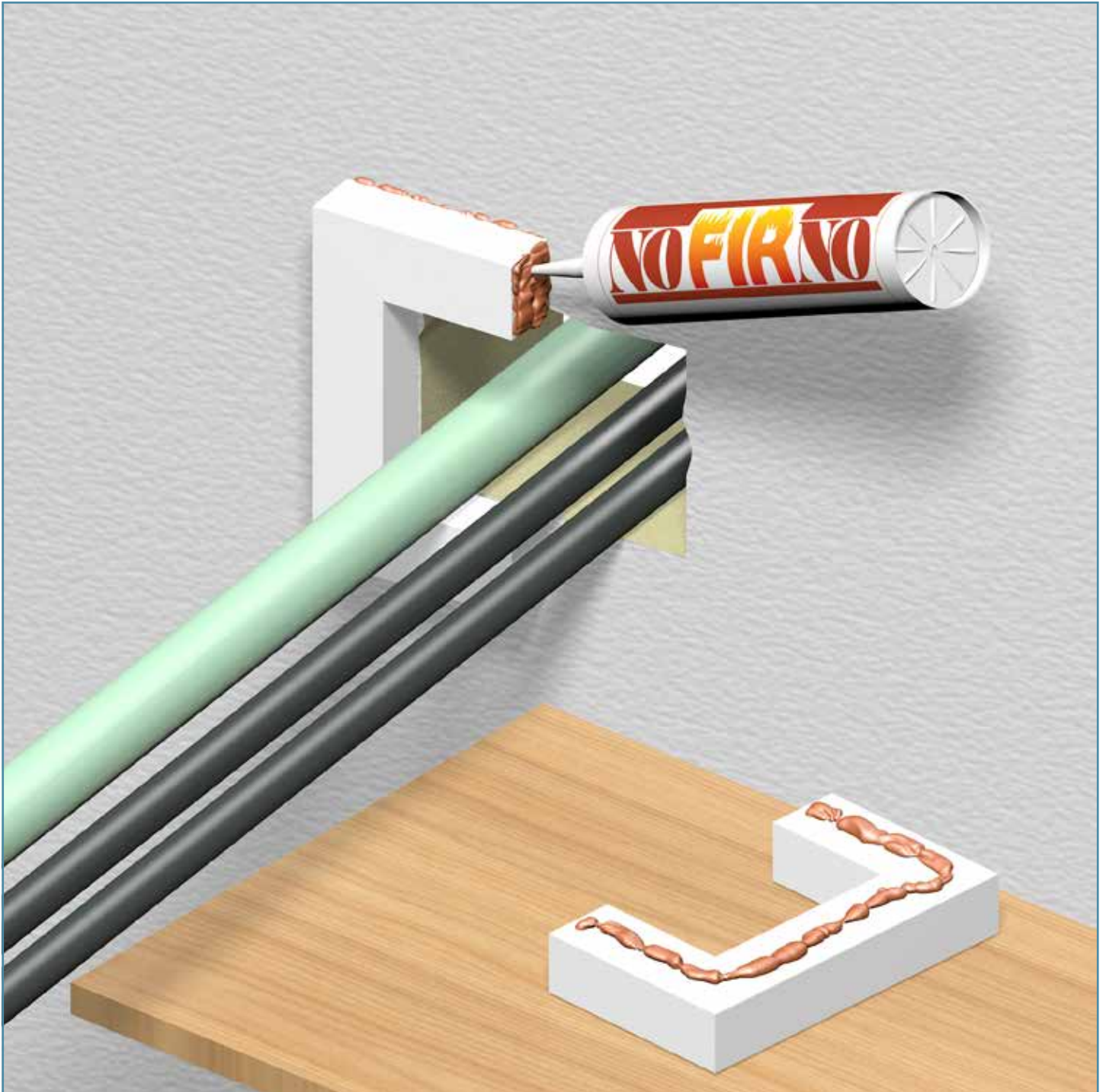
**INSTALLATION INSTRUCTIONS FOR NOFIRNO® MULTI-CABLE
TRANSIT SEALING SYSTEM IN FYLLOFYS CONDUITS**



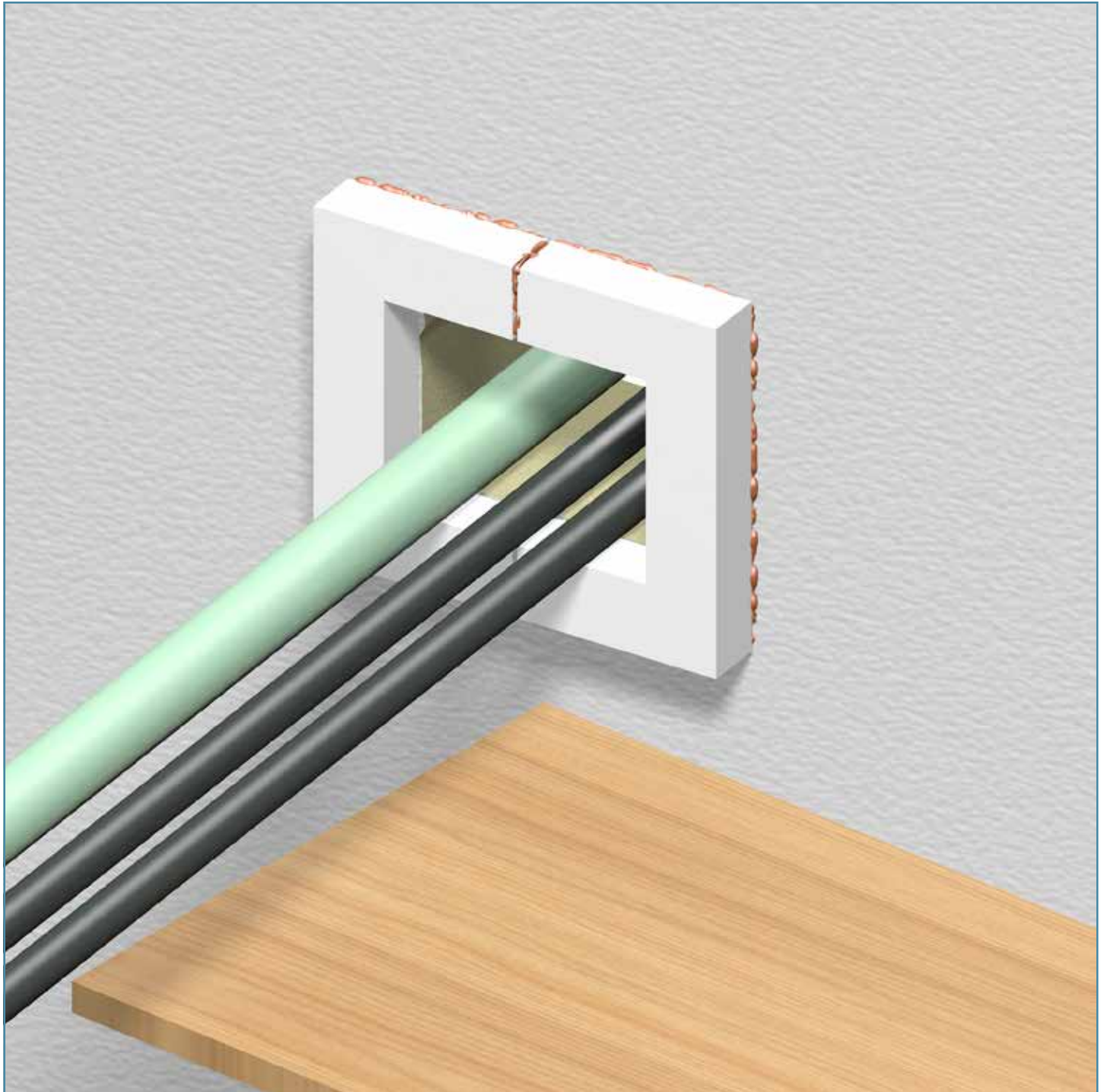
INSTALLATION INSTRUCTIONS FOR NOFIRNO® MULTI-CABLE TRANSIT SEALING SYSTEM IN FYLLOFYS CONDUITS



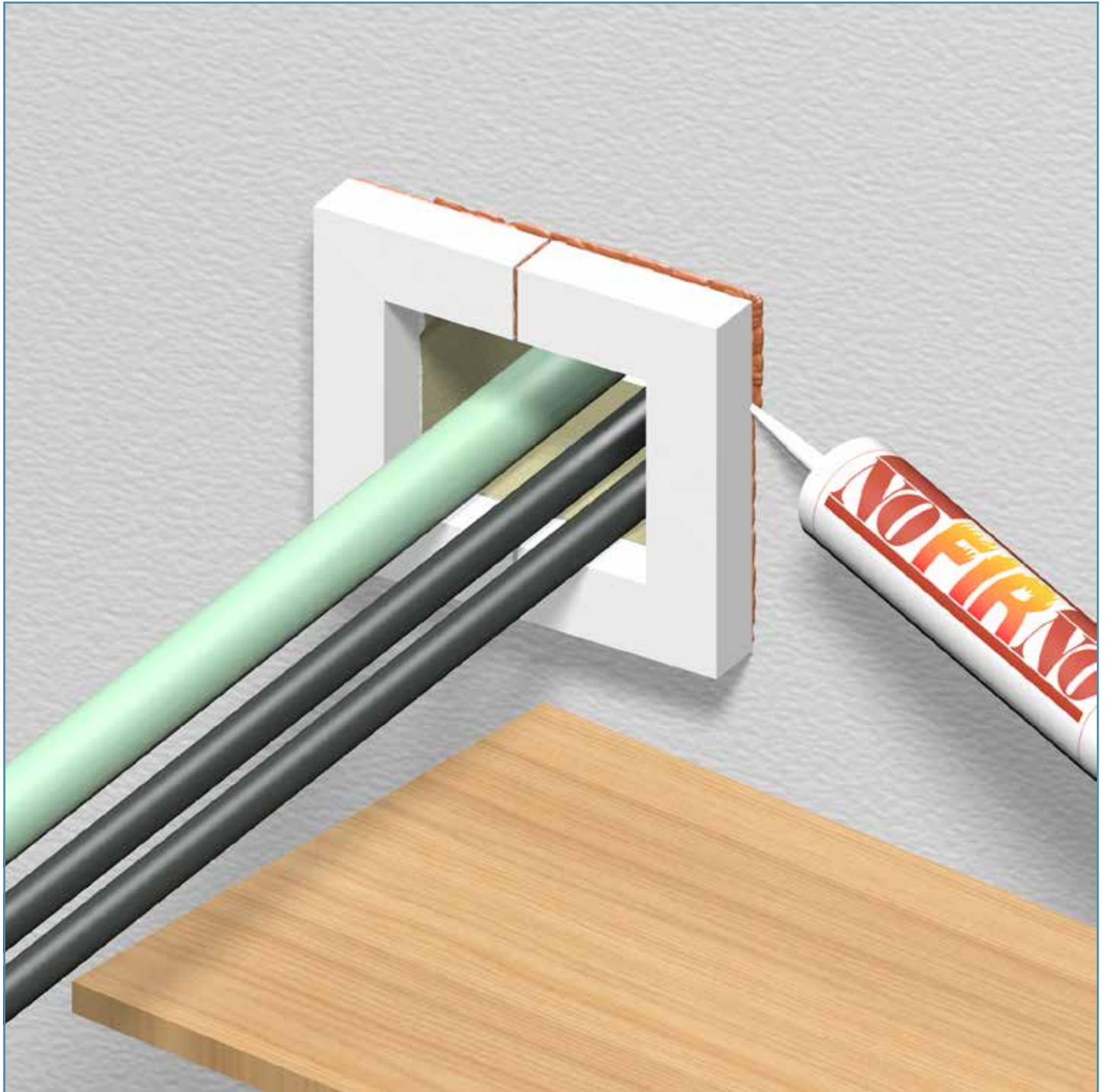
INSTALLATION INSTRUCTIONS FOR NO FIRNO® MULTI-CABLE TRANSIT SEALING SYSTEM IN FYLLOFYS CONDUITS



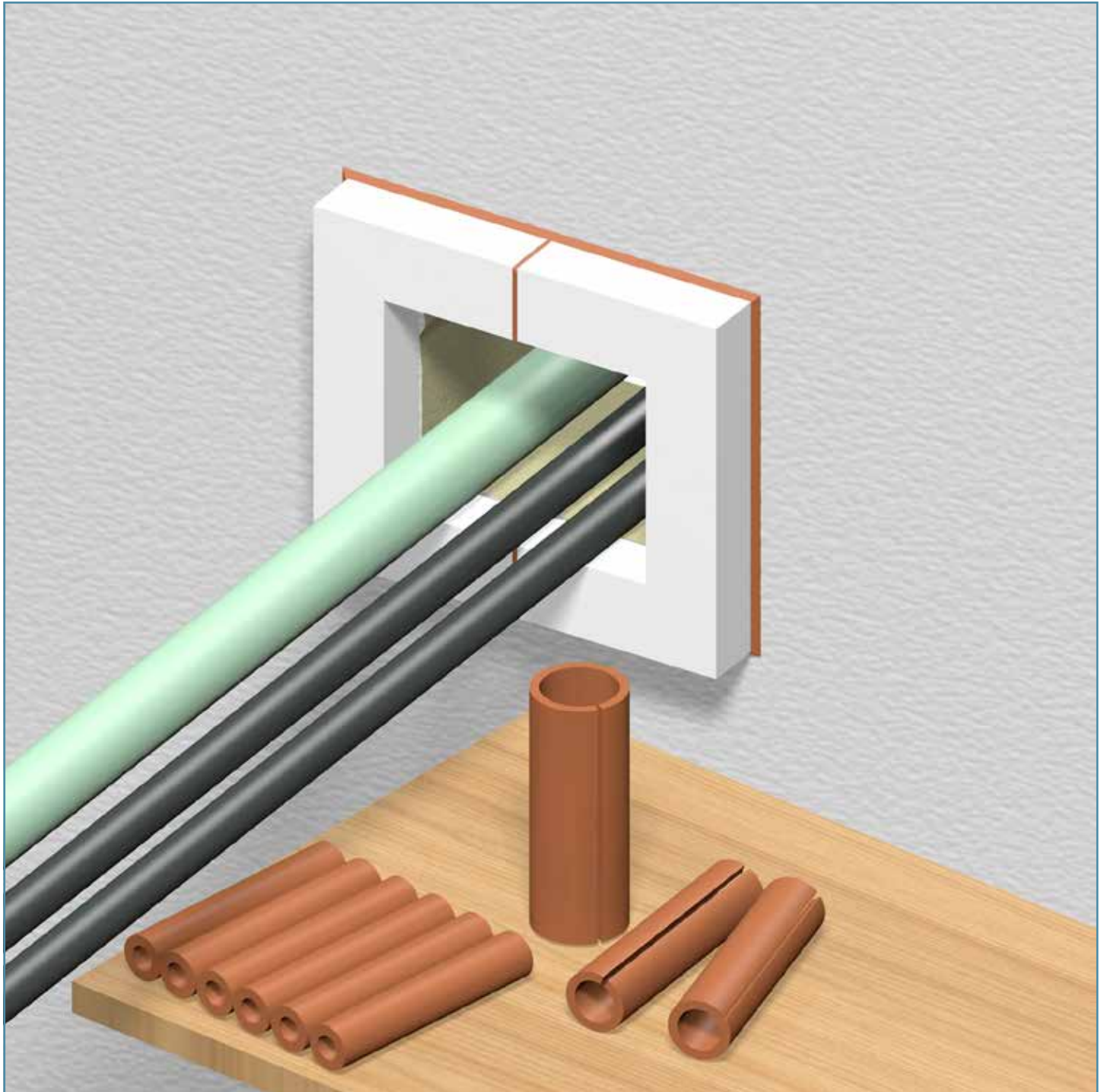
**INSTALLATION INSTRUCTIONS FOR NOFIRNO® MULTI-CABLE
TRANSIT SEALING SYSTEM IN FYLLOFYS CONDUITS**



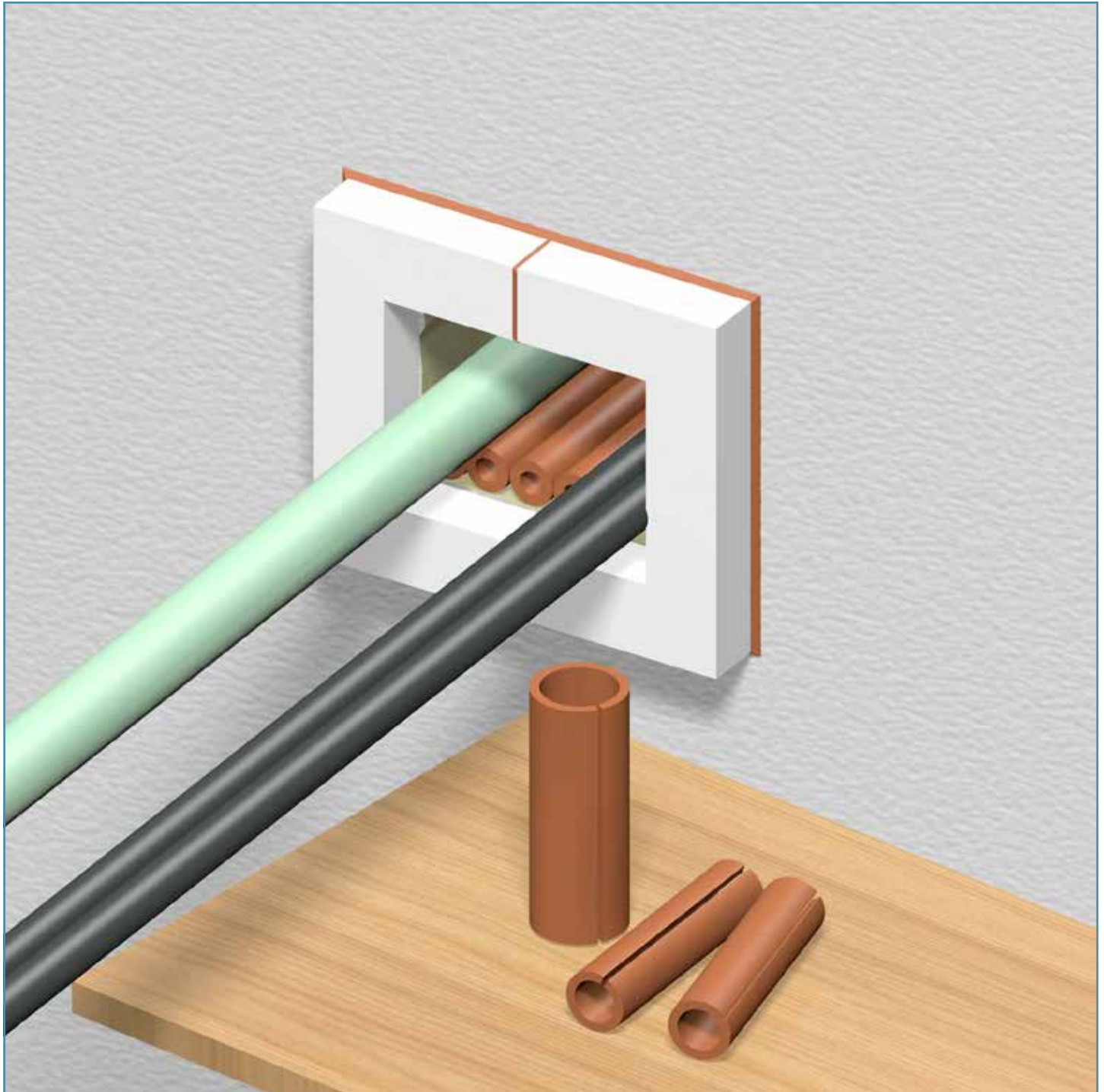
**INSTALLATION INSTRUCTIONS FOR NOFIRNO® MULTI-CABLE
TRANSIT SEALING SYSTEM IN FYLLOFYS CONDUITS**



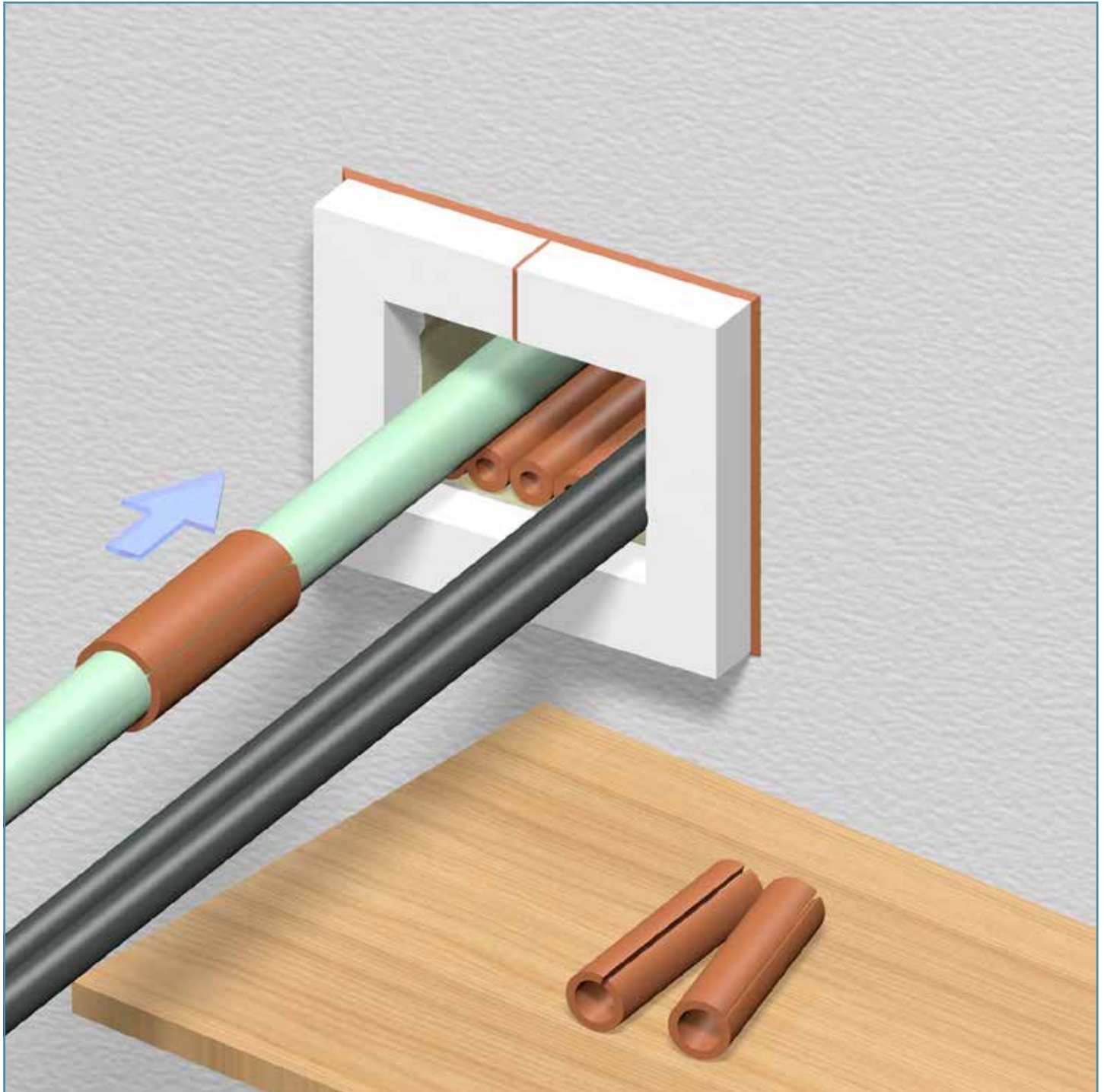
**INSTALLATION INSTRUCTIONS FOR NOFIRNO® MULTI-CABLE
TRANSIT SEALING SYSTEM IN FYLLOFYS CONDUITS**



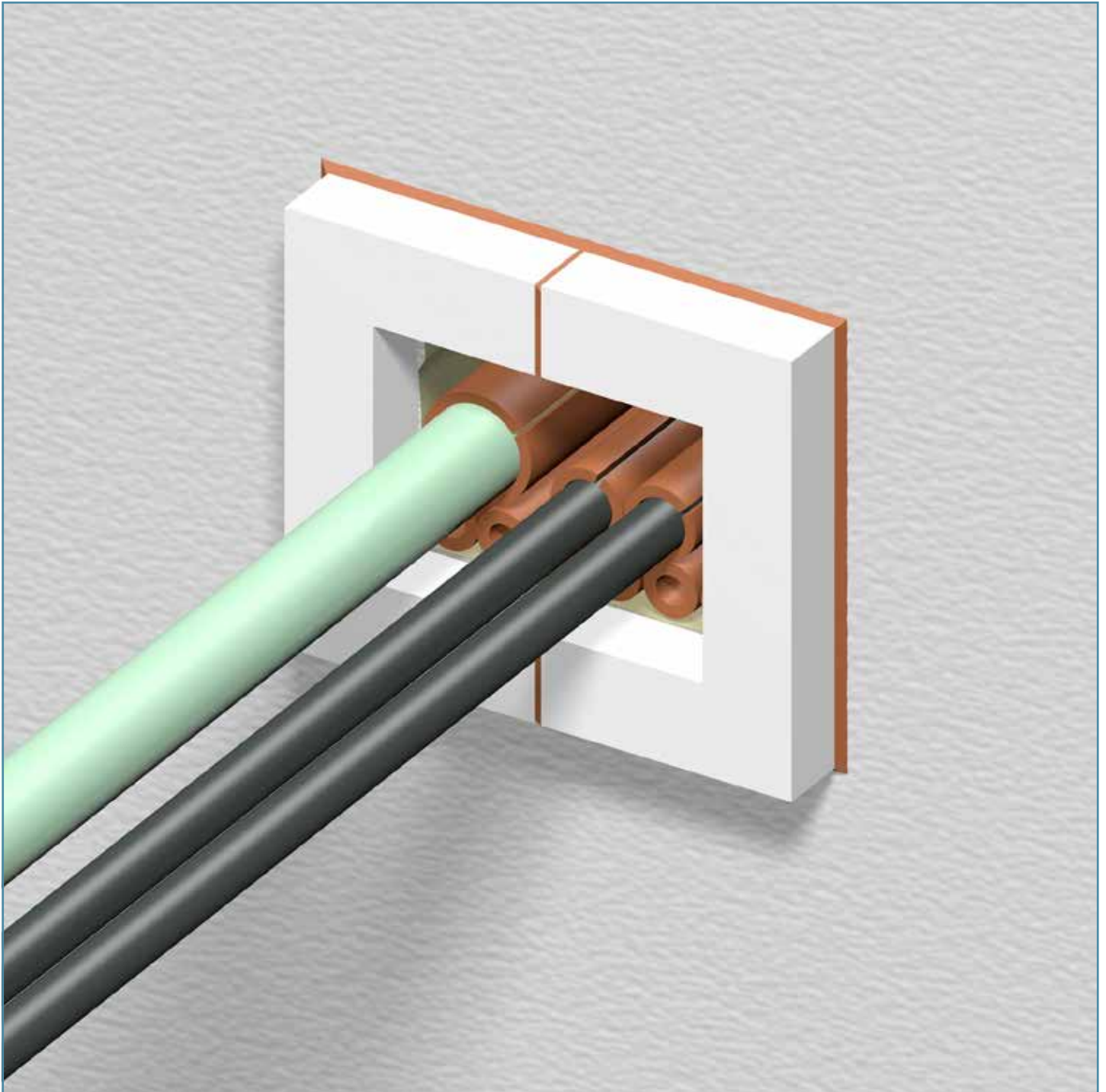
**INSTALLATION INSTRUCTIONS FOR NOFIRNO® MULTI-CABLE
TRANSIT SEALING SYSTEM IN FYLLOFYS CONDUITS**



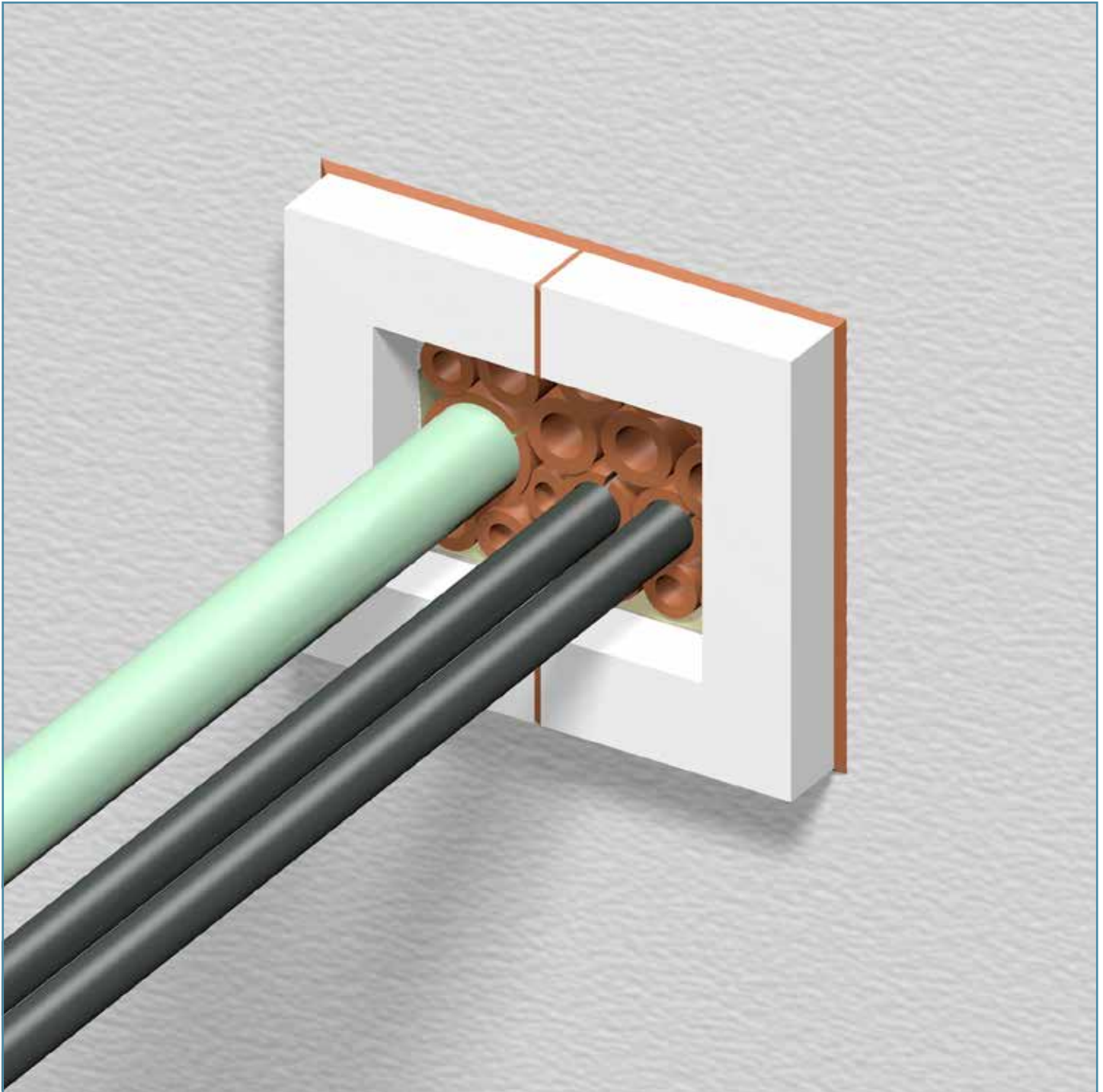
**INSTALLATION INSTRUCTIONS FOR NOFIRNO® MULTI-CABLE
TRANSIT SEALING SYSTEM IN FYLLOFYS CONDUITS**



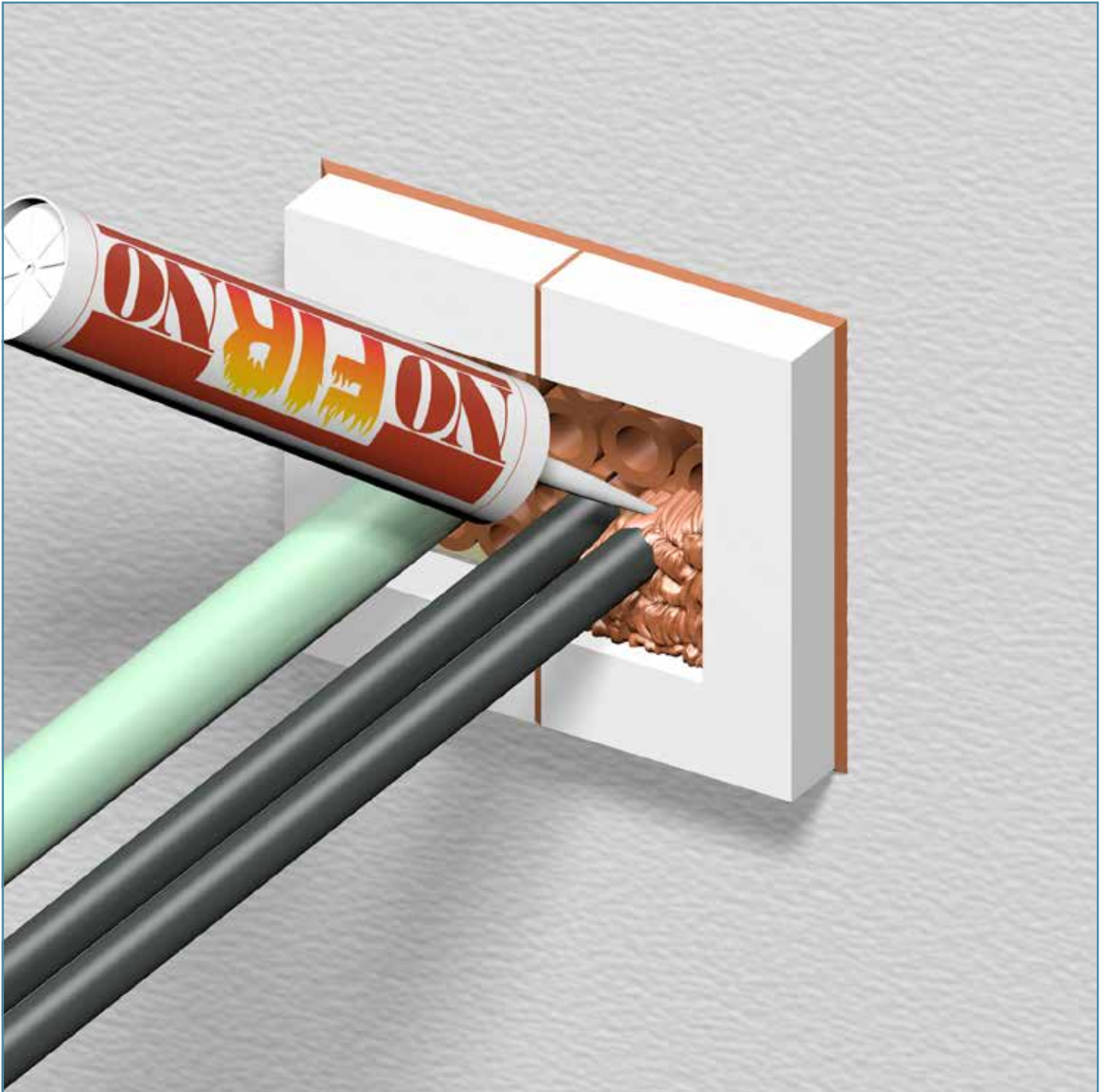
**INSTALLATION INSTRUCTIONS FOR NOFIRNO® MULTI-CABLE
TRANSIT SEALING SYSTEM IN FYLLOFYS CONDUITS**



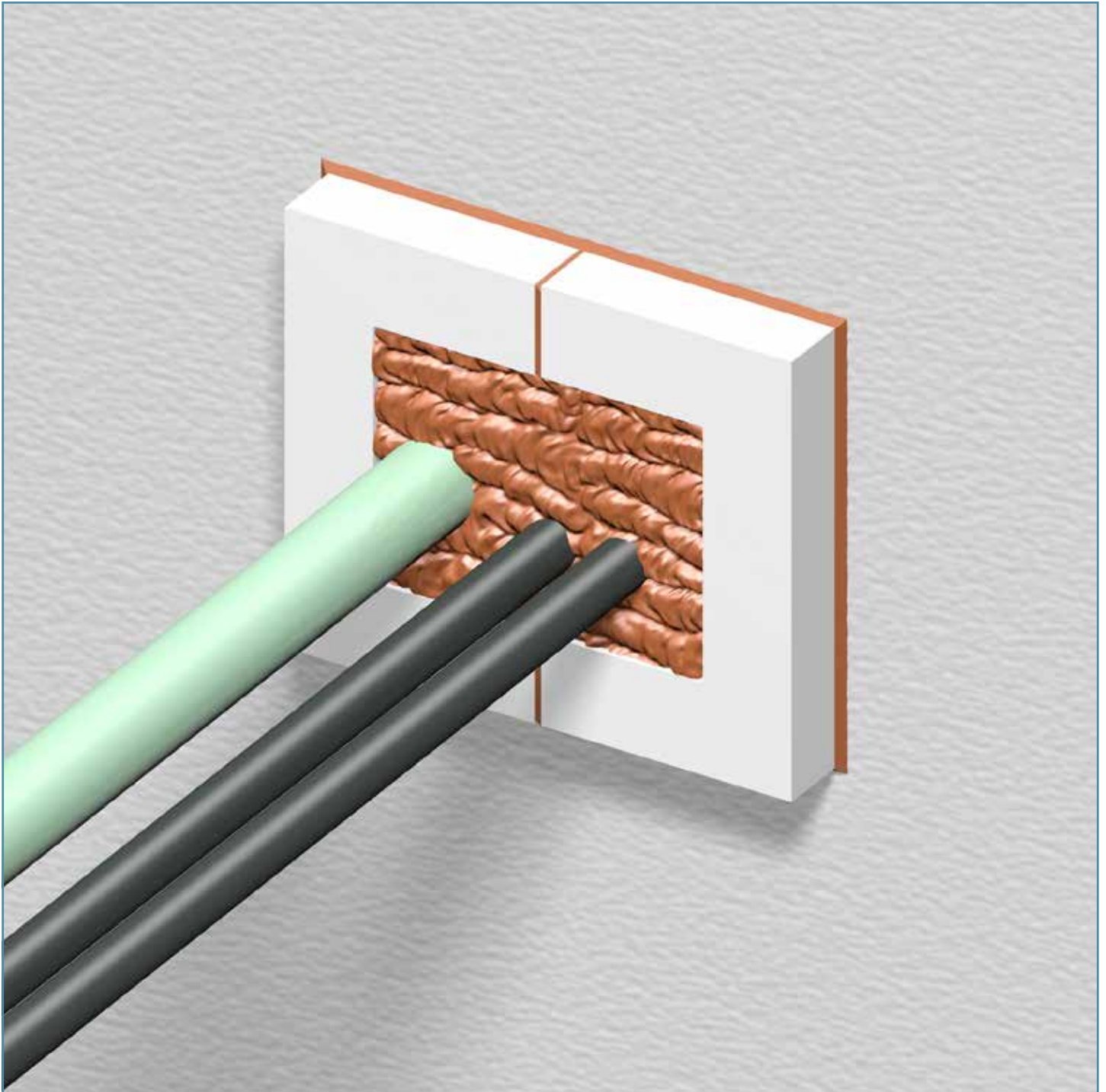
**INSTALLATION INSTRUCTIONS FOR NO FIRNO® MULTI-CABLE
TRANSIT SEALING SYSTEM IN FYLLOFYS CONDUITS**



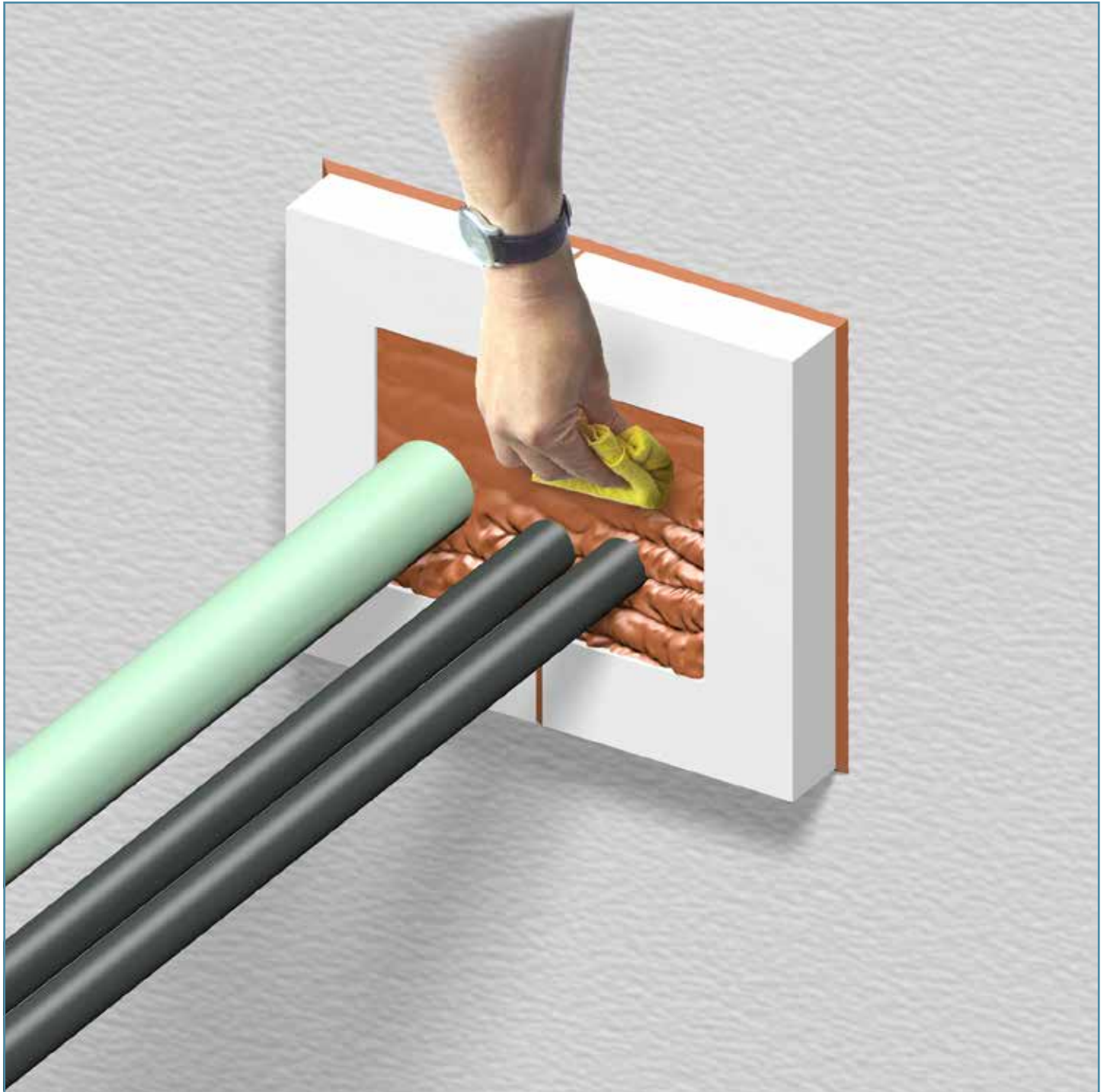
INSTALLATION INSTRUCTIONS FOR NO FIRNO® MULTI-CABLE TRANSIT SEALING SYSTEM IN FYLLOFYS CONDUITS



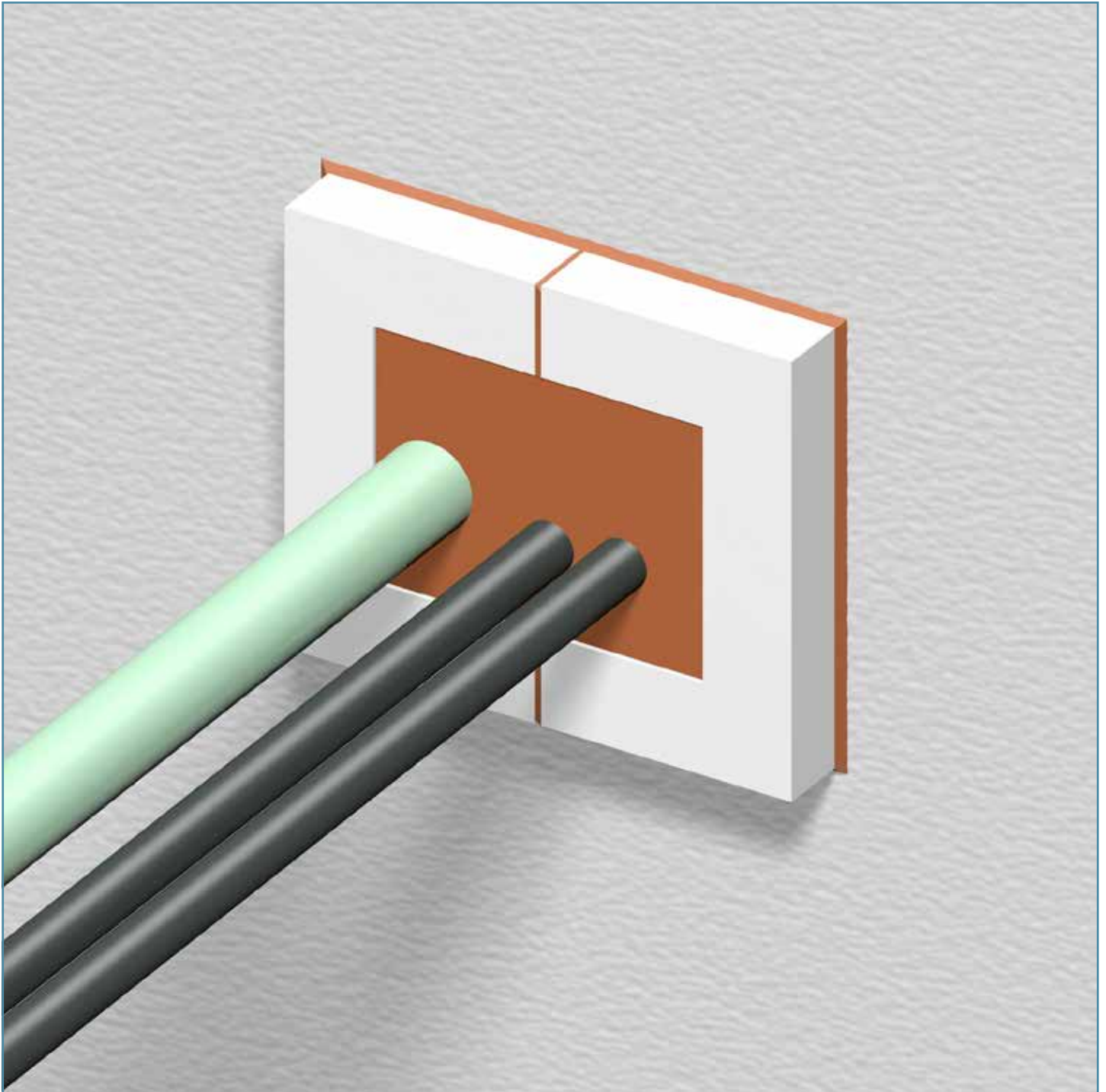
INSTALLATION INSTRUCTIONS FOR NOFIRNO® MULTI-CABLE TRANSIT SEALING SYSTEM IN FYLLOFYS CONDUITS



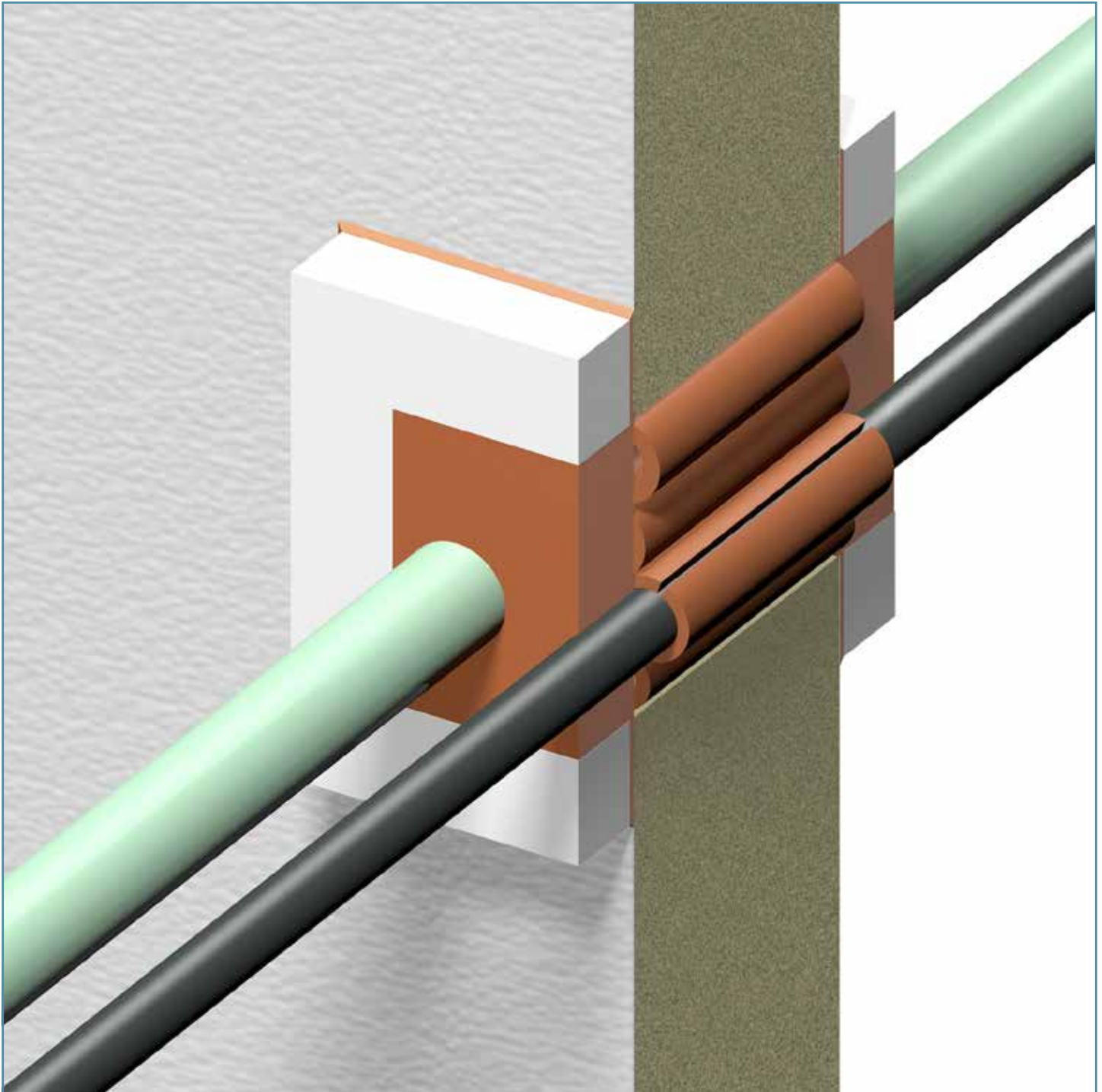
**INSTALLATION INSTRUCTIONS FOR NO FIRNO® MULTI-CABLE
TRANSIT SEALING SYSTEM IN FYLLOFYS CONDUITS**

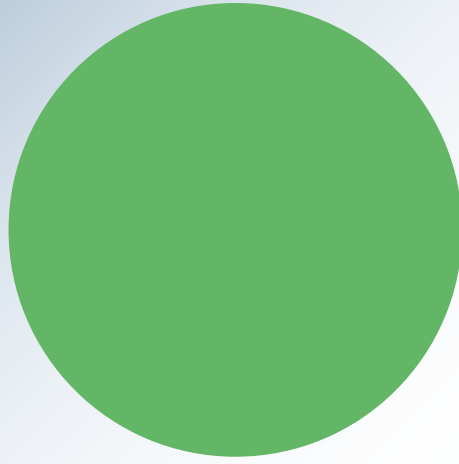


**INSTALLATION INSTRUCTIONS FOR NOFIRNO® MULTI-CABLE
TRANSIT SEALING SYSTEM IN FYLLOFYS CONDUITS**



**INSTALLATION INSTRUCTIONS FOR NOFIRNO® MULTI-CABLE
TRANSIT SEALING SYSTEM IN FYLLOFYS CONDUITS**





WE CARE

**BEELE ENGINEERING:
A COMPANY DEDICATED
TO SAFETY
FOR 50 YEARS**



BEELE Engineering bv
Beunkdijk 11 - 7122 NZ AALTEN - THE NETHERLANDS
Tel. +31 543 461629 - Fax +31 543 461786 - E-mail: info@beele.com
Websites: <https://www.beele.com>, sealingvalley.com and fissiccoating.com